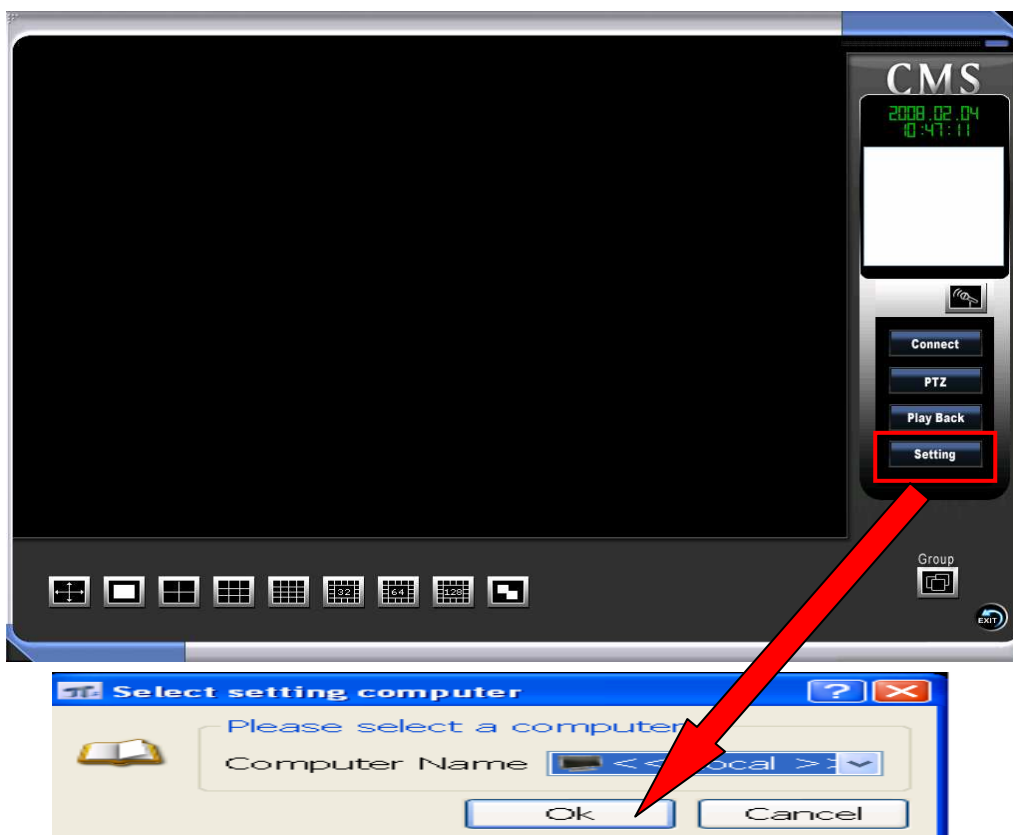


Linux DVR Remote Program (RX) Basic Configuration

☆ Supports XP and SP2 operating system.

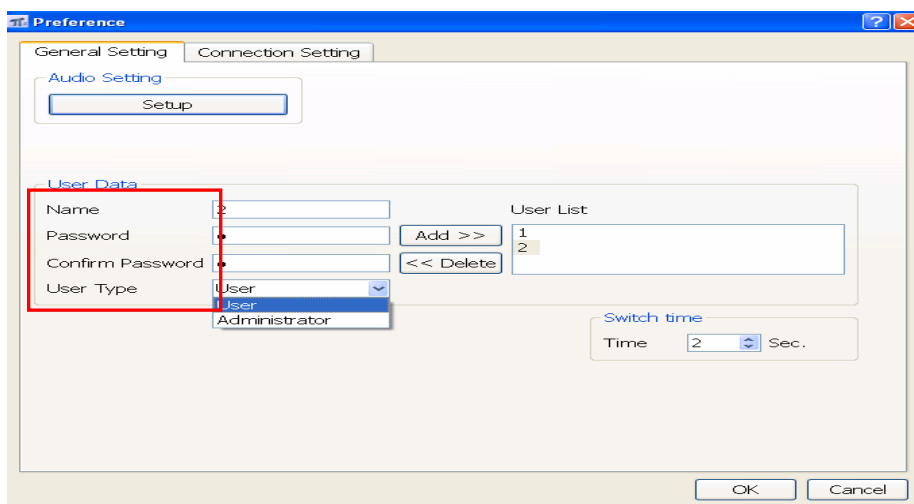
Enter **Setting** on Remote Program (RX) main page.



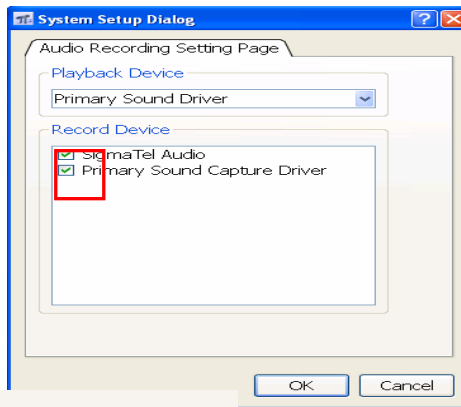
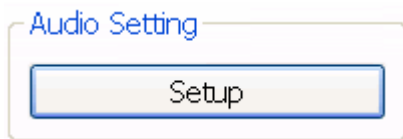
◆ General Setting

Set up “name” and “password” for administrator and users to login free CMS (RX)

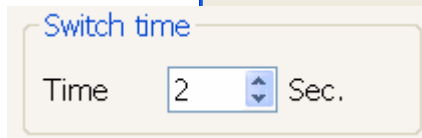
1. Login as Administrator has the privilege to adjust settings of the host computer, and view both live view and playback. Login as Users can only have the functions of live view and playback.
2. It is extremely necessary to set up “name” and “password” for both administrator and users
3. If both administrator and user are not set up, you are direct administrator of the system.



Broadcast settings: Enter Audio Setting “Setup” and enable “Primary Sound Capture Driver” **Only**.

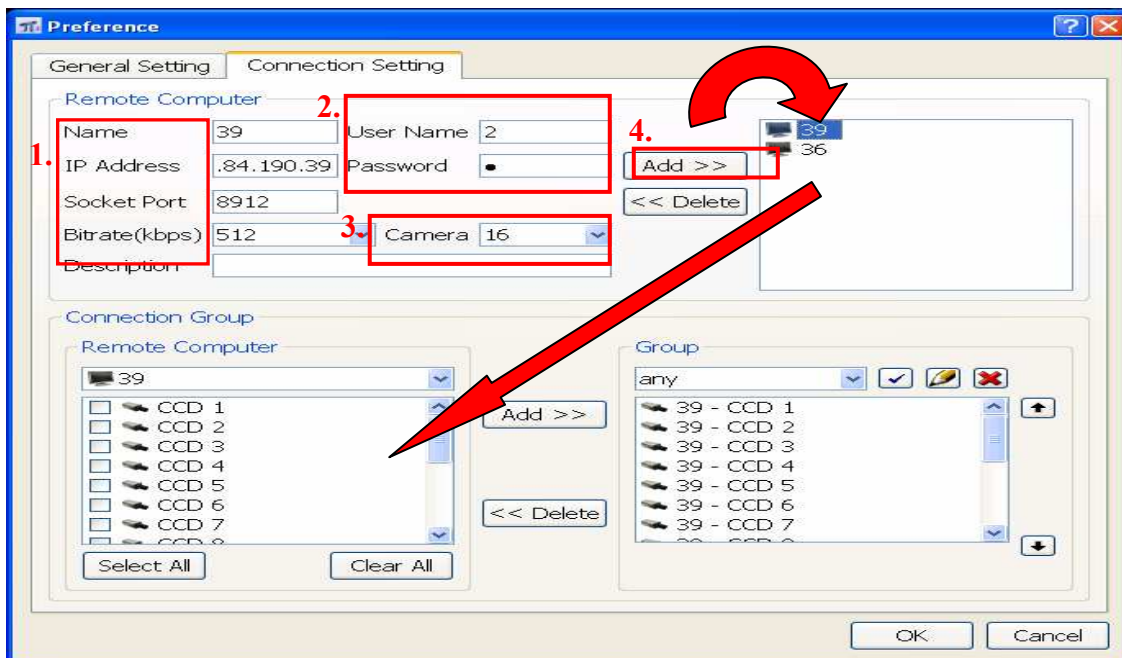


Switch Time: select time for sequencing



◆ **Connecting Setting**

System provides connection for monitoring multiple-DVR's.



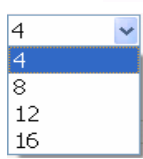
1. Enter: **Name** of host computer (of your choice),
IP address,
Socket Port “ **8912**” (don't change)
Bitrate (kbps)

2. Key in host computer “User Name” and
“Password”.

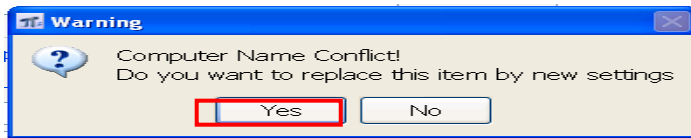
3. Select number of cameras for monitoring.

4.


Note: For a successful Connecting settings change you must click **Add >>** **every time** you make any change.

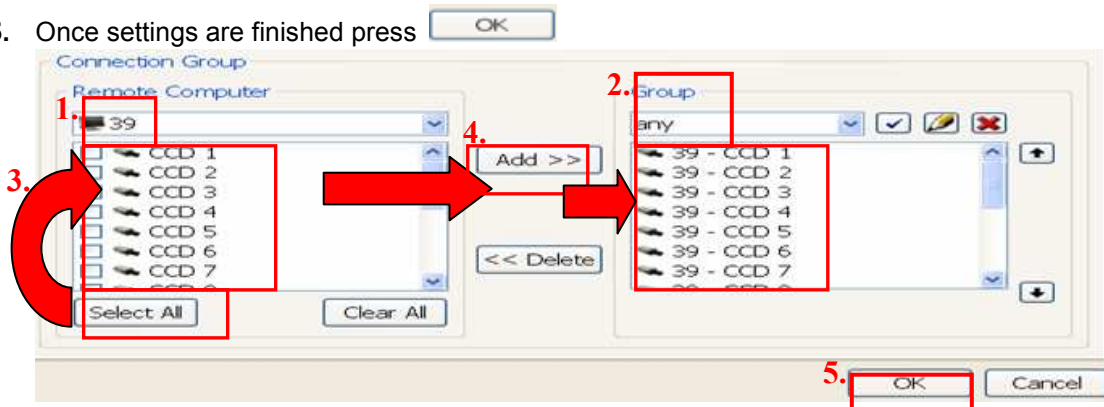





Warning window will pop up, please click “Yes”

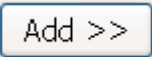
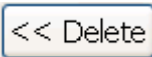


Connection group settings:

1. Connect to host computer
2. Name group name (of your choice)
3. Select cameras for monitoring under given group name
4. Press “add”
5. Once settings are finished press 



-  : Group name setting
-  : Change group name
-  : Delete group

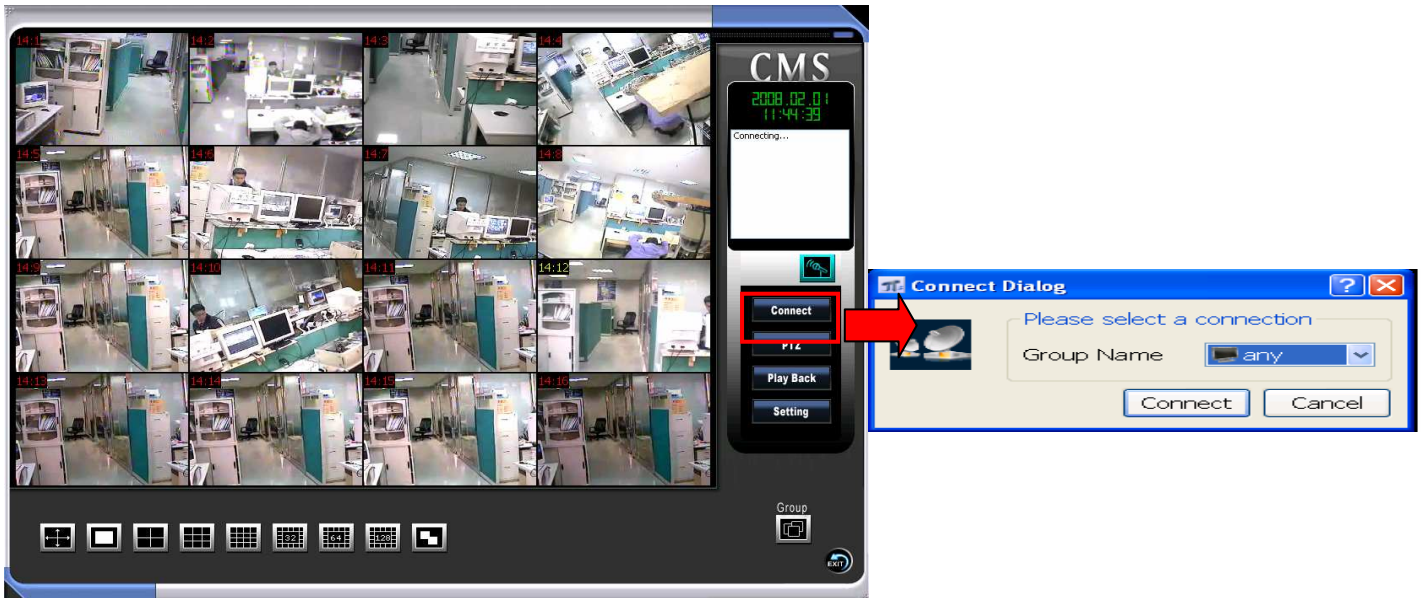
-  : add CCD cameras to the group
-  : delete CCD cameras from the group

*** After finishing settings, press “OK”, then restart program and login as administrator or users of CMS (RX).**



Re-start remote program as “user”



Select  and choose” **Group**” to be monitored.



◆ **Broadcasting System**

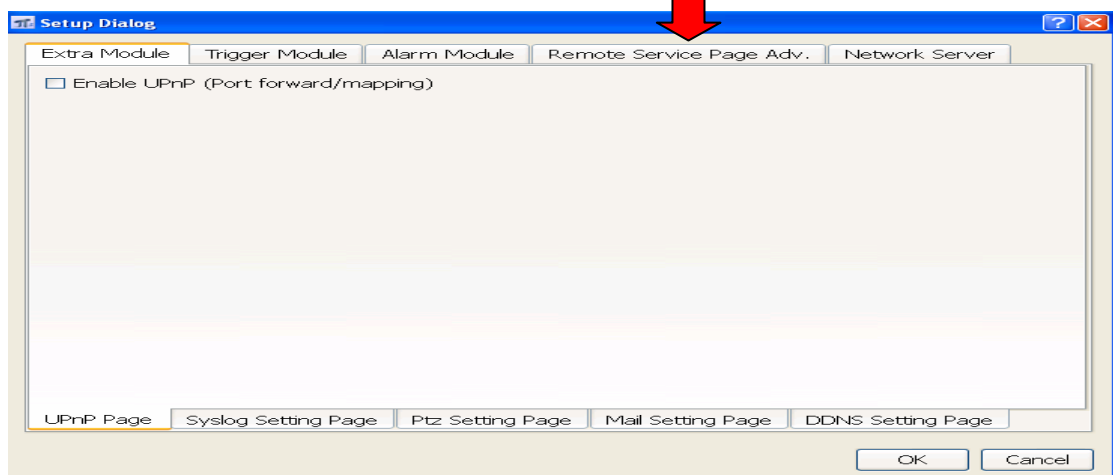
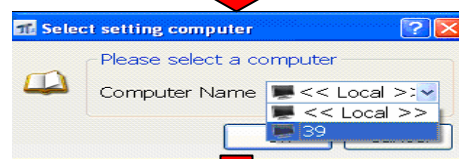
1. To start broadcasting press  icon and color will turn .
2. Click on camera location of certain IP without letting go of the mouse and transmit voice via microphone.
3. Can also listen to host computer simultaneously.

◆ **Change host computer setting parameter** (Only for login as administrator)

1. Click on “settings” icon



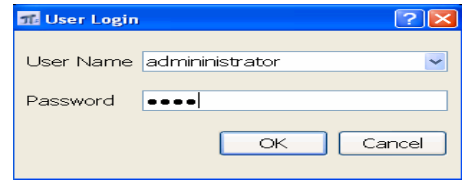
2. Select “computer name”



◆ **Playback host computer recording files**

1. Login CMS (RX) as **“administrator”**

Key in administrator “name” and “password” to playback all cameras.



2. Login CMS (RX) as **“user”** will ask user ID and need to key in “user name” and “password” to connect host computer.

