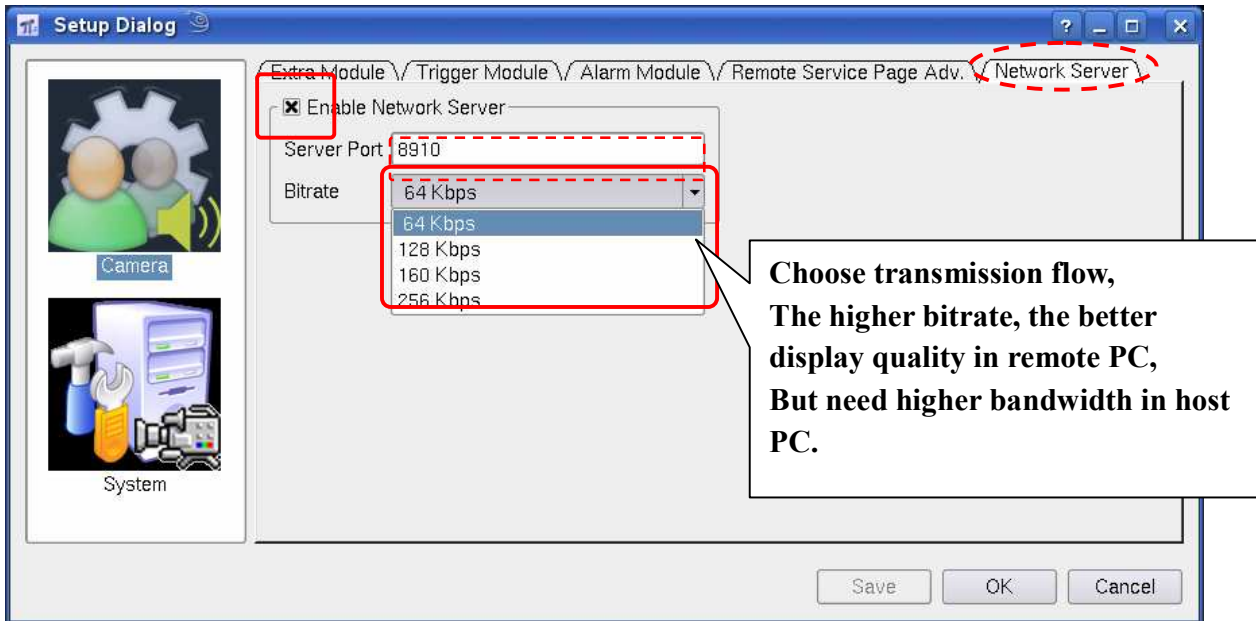


Remote monitoring with PDA (supports Windows Mobile 5.0 and 6.0)



Part 1: Go to -- Camera – Network Server

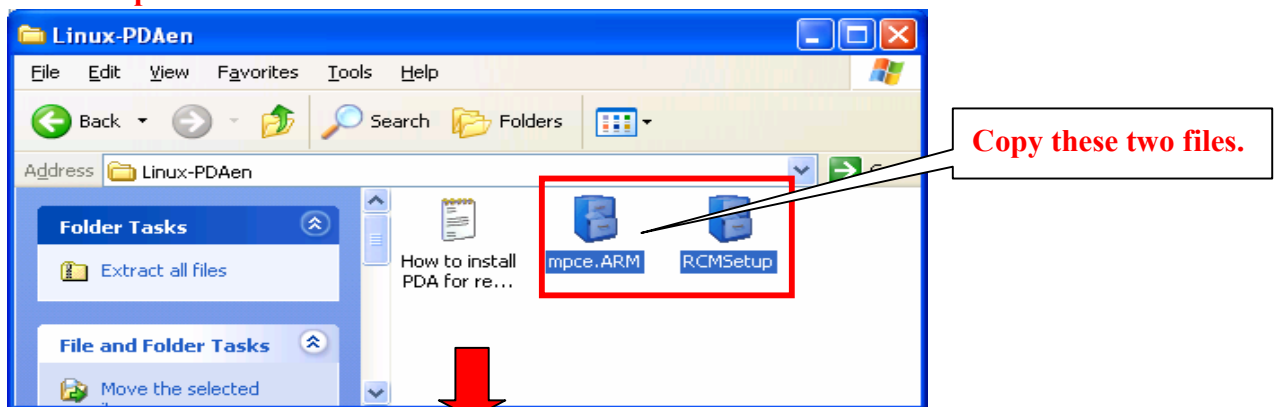
Enable web server for remote monitoring from IE /PDA/ 3G cell phone, the default server port is 8910 → Select Bitrate



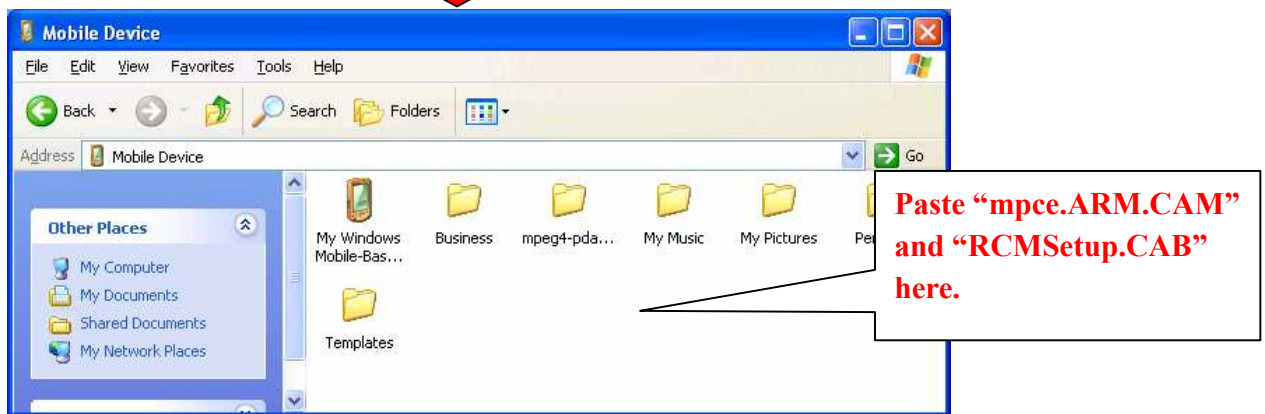
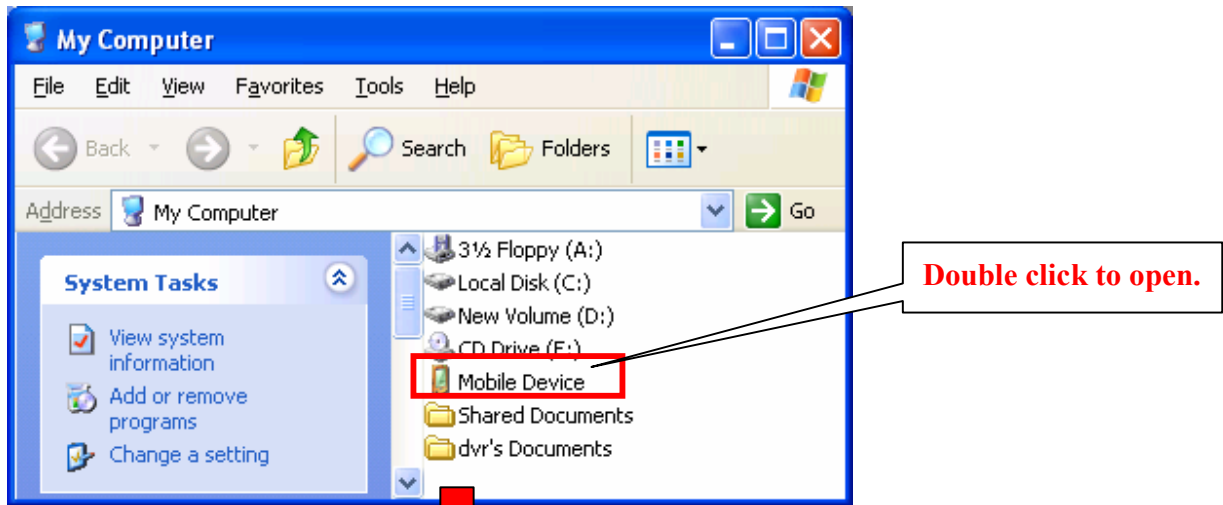
Before installing SkyView remote monitoring software, please make sure ActiveSync is installed under Windows O.S. and running. ActiveSync should be provided by the manufacture of PDA purchased, it enables communications between computer and PDA via USB connection. ActiveSync can also be downloaded from Microsoft's official website. Follow the instructions below to setup remote monitoring software on your PDA.

Part 2: Get "Linux-PDAen.zip" from CD (PDA/3G/RX.AP)

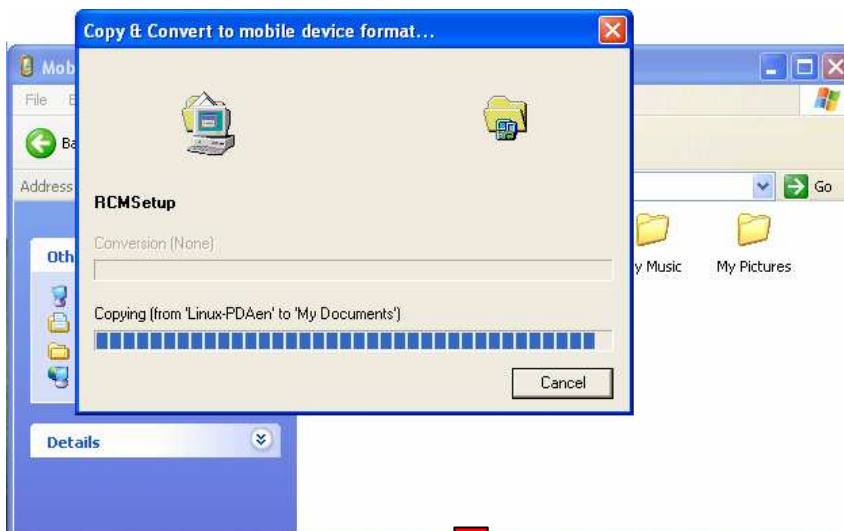
1. Unzip "Linux-PDAen.zip", you will find "mpce.ARM", "RCMSetup" and instruction file on how to install PDA for remote view. **Copy both "mpce.ARM" and "RCMSetup" now and follow step 4 & 5 to transfer both files into PDA.**

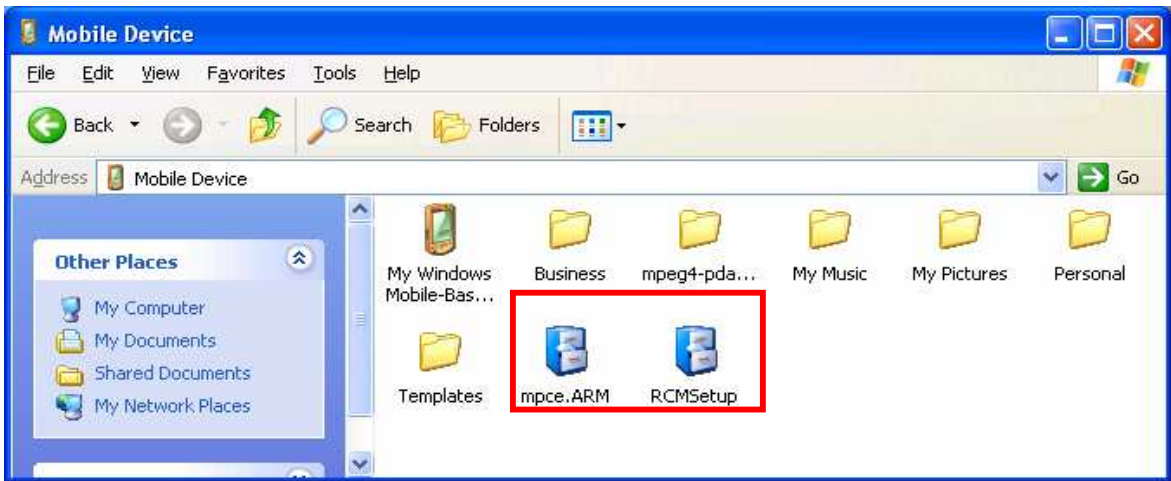


2. Click “Start” and select “My Computer”. Locate access point of your PDA device “Mobile Device” and double click it to open.

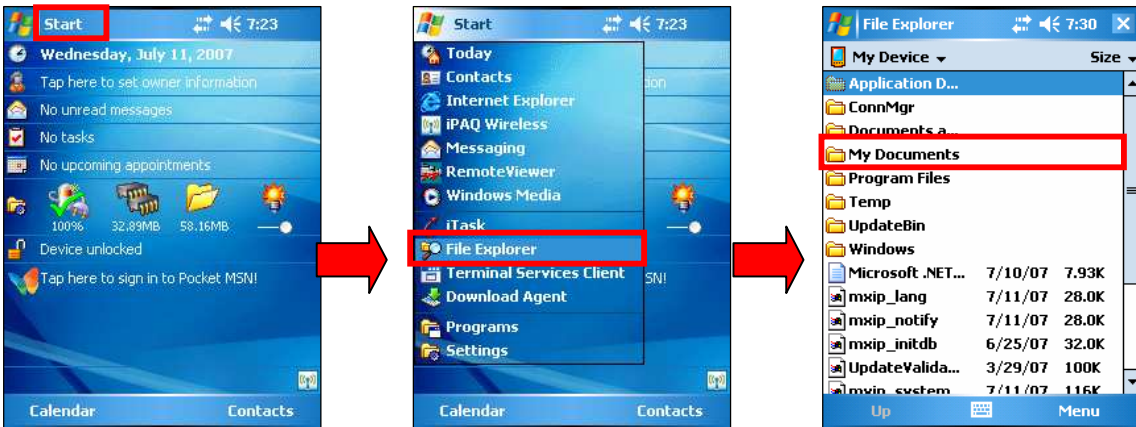


3. Paste both “mpce.ARM” and “RCMSetup” into “Mobile Device”



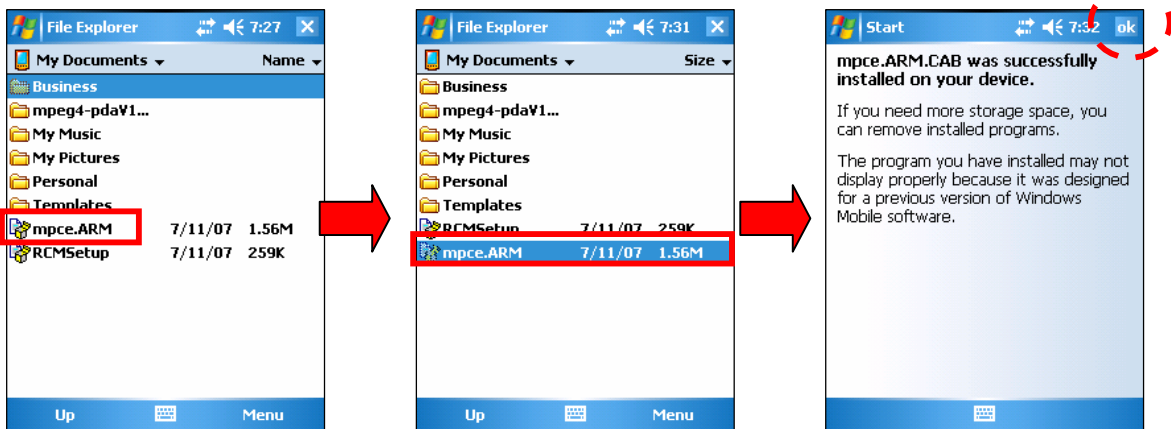


4. From PDA main screen, click “Start” → “File Explorer” → “My Documents”.

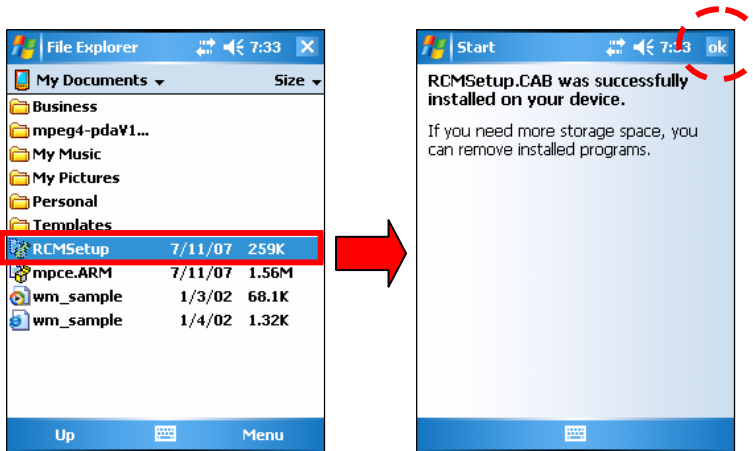


5. Locate “mpce.ARM”, click it once and installation will begin automatically. After “mpce.ARM” installed, click “ok” to proceed.

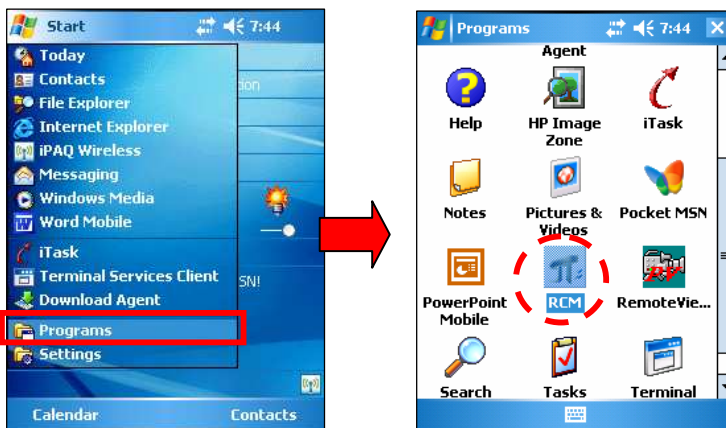
Note: “mpce.ARM” must be installed first before installing “RCMSetup”.



6. Locate “RCMSetup”, click it once and installation will begin automatically. After “RCMSetup” installed, click “ok” to proceed.



7. Click “File Explorer” and main screen will appear. Select “Programs” and locate “RCM”, click it once to activate application.



8. Once “RCM” is activated, click “Menu” and select “Manage Connections” to enter Setup section. Input all camera information in the “Manage Connections” section and click “ok” to exit “Manage Connections” section.

Camera group list.

a. Type in the camera group name desire.

b. Add new camera group name into group list.

Camera list

c. Type in camera name desire.

d. Type in camera IP address.

e. Type in camera number. (Note: camera 0 = CH 1, 1 = CH 2, etc.)

f. Type in camera port

g. Click "Add" to add new camera information into camera list.

9. Click "Menu" and select "Connect". Select the camera type, name from the drop down list and click "Connect" to view camera selected.