

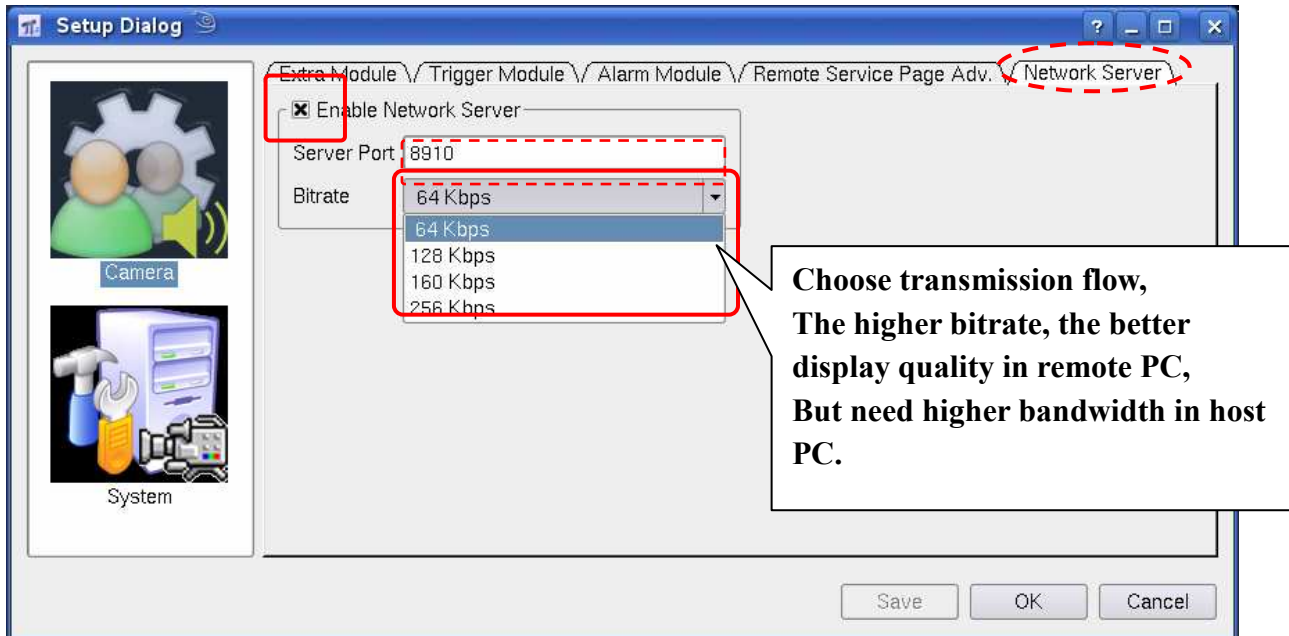
※Remote monitoring with 3G Mobile Phone (Supports Nokia & Sony Ericsson 3G

Mobile phone)

(e.g. Sony Ericsson K800i)

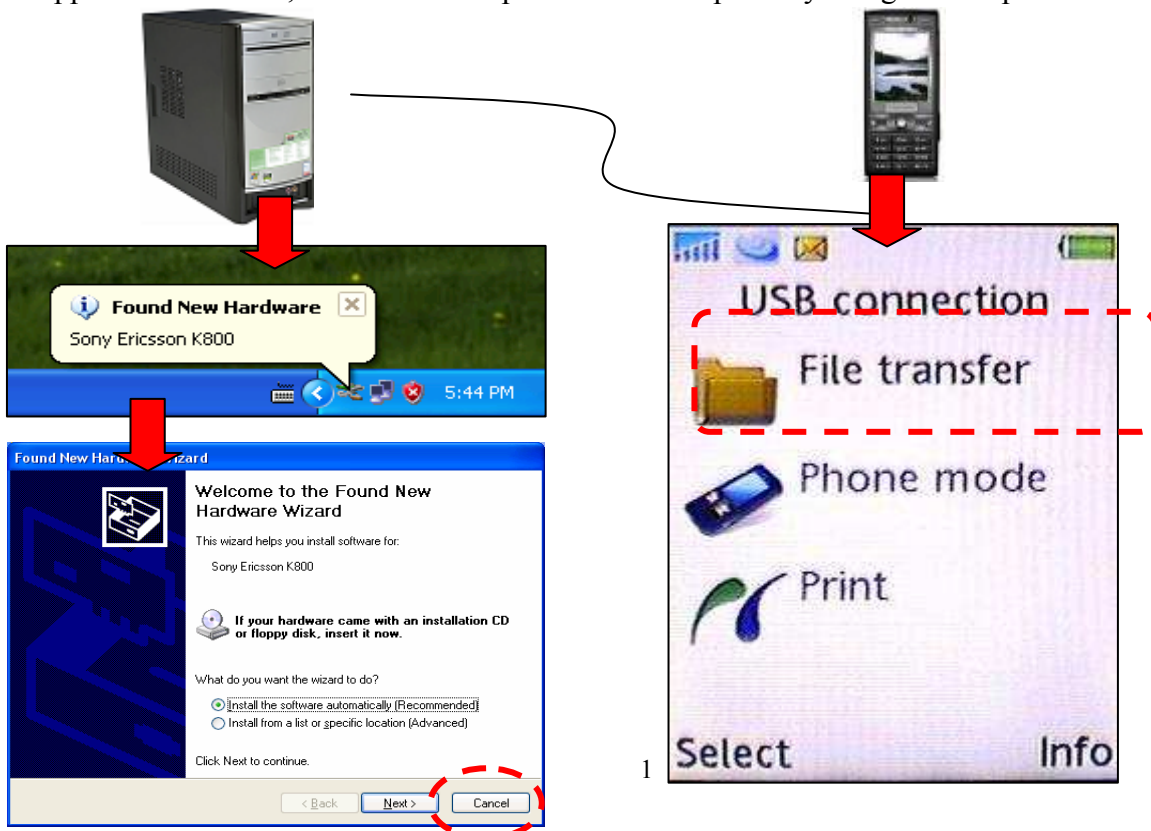
Step1: Go to  -- Camera – Network Server

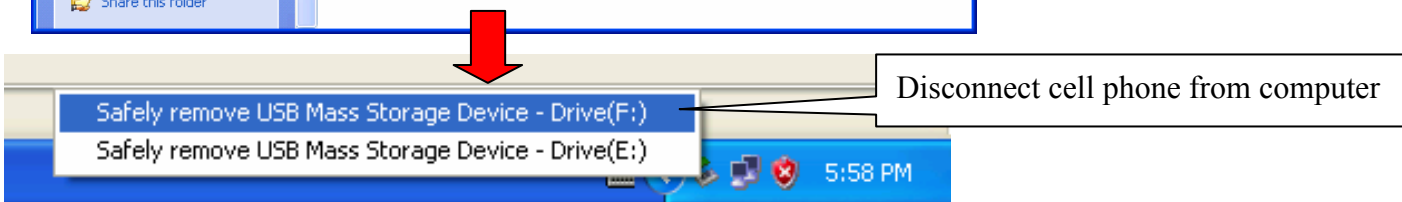
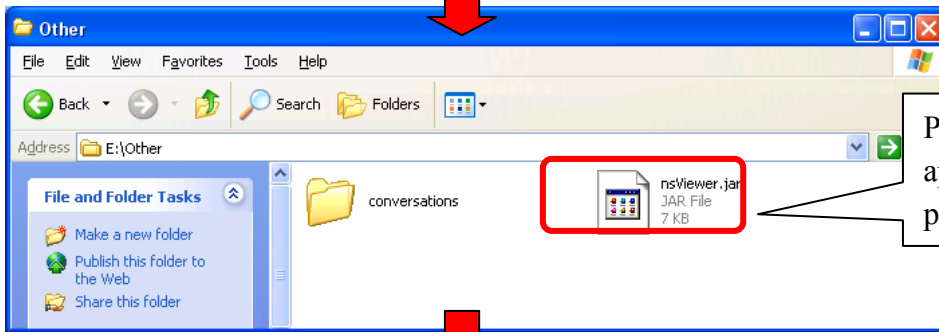
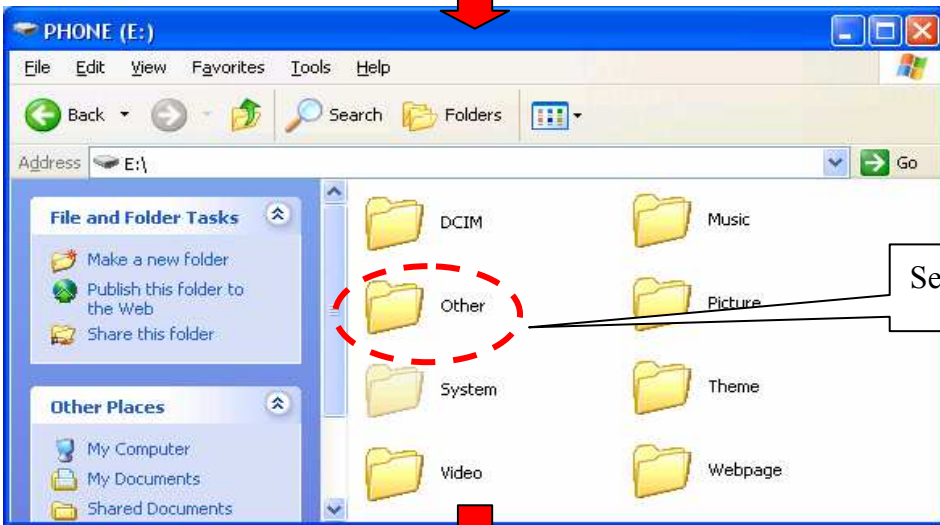
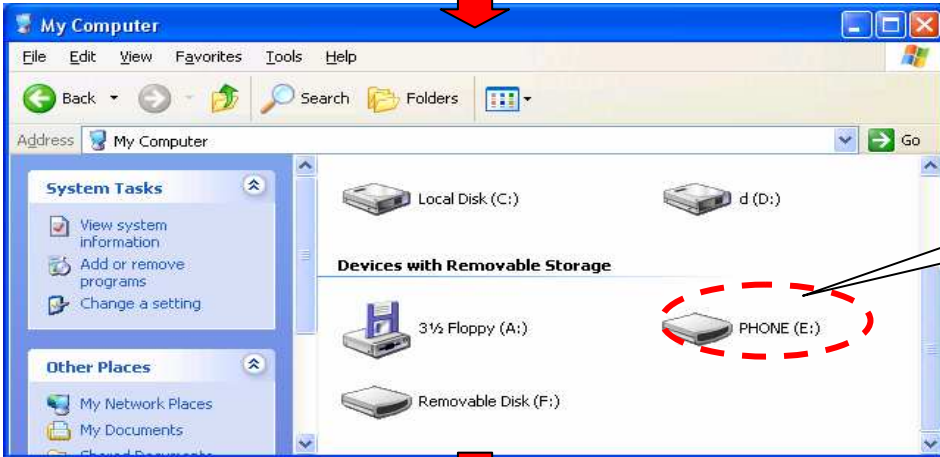
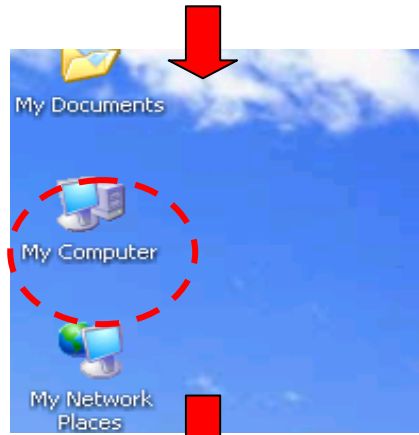
Enable web server for remote monitoring from IE /PDA/ 3G cell phone, the default server port is 8910 → Select Bitrate



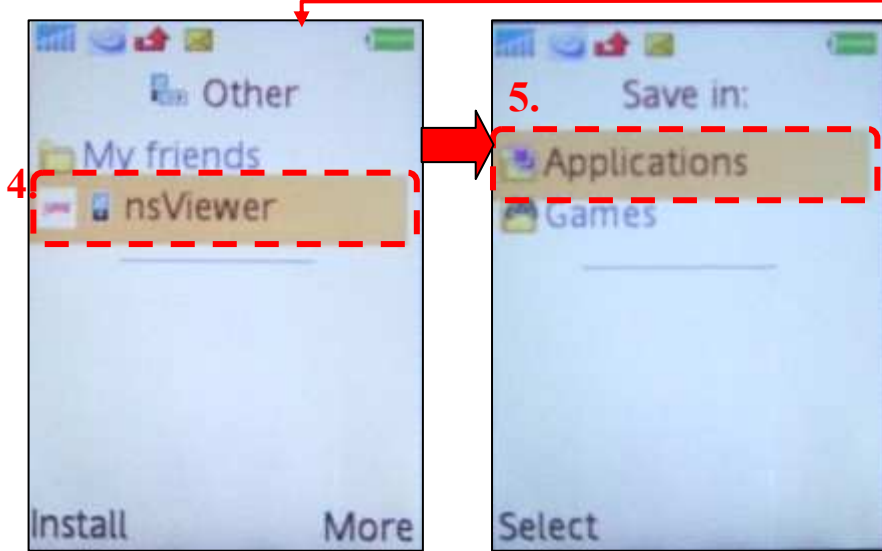
Step2: Get “nsViewerjar” java application from CD (PDA/3G/RX.AP) into your 3G cell phone.

1. Connect cell phone with computer by using USB communication wire. After computer detects connected cell phone, copy “nsViewer.jar” java application into your cell phone. Once completed java application transfer, disconnect cell phone from computer by using correct procedure.

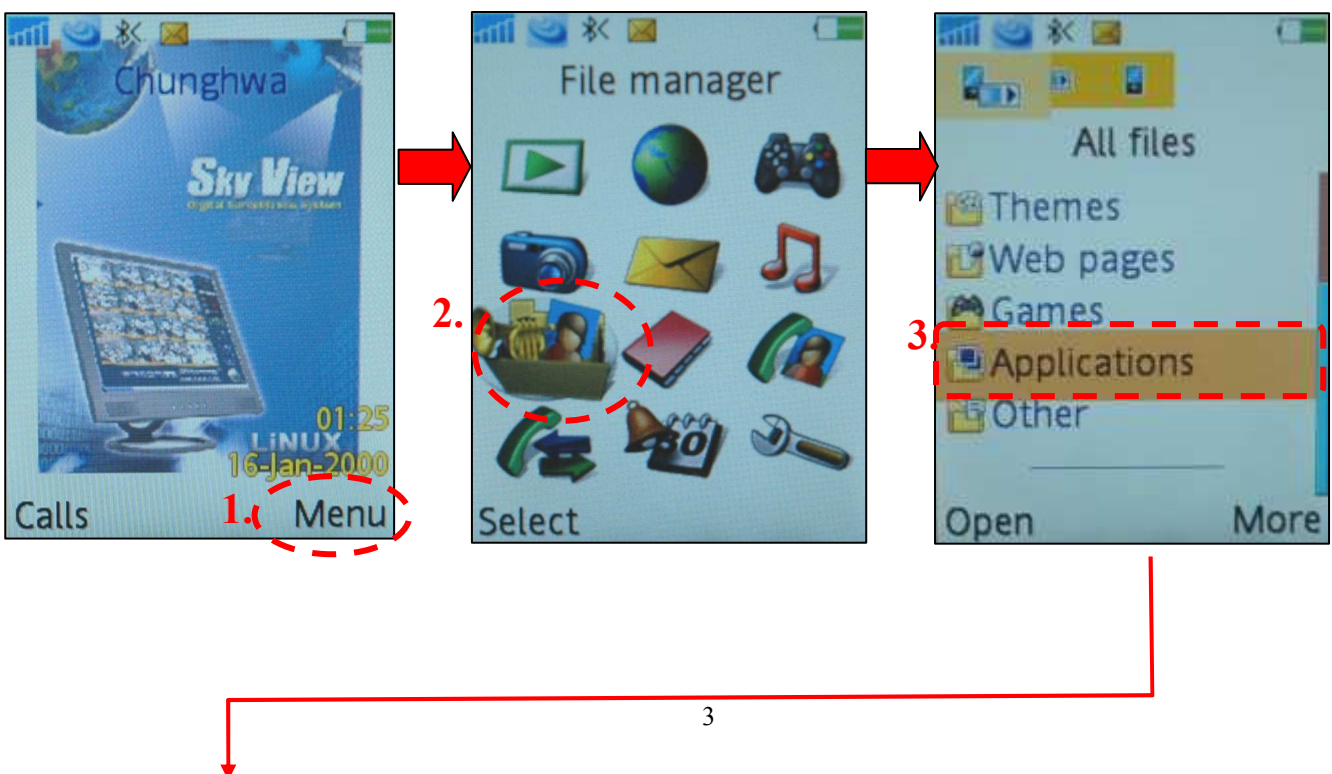


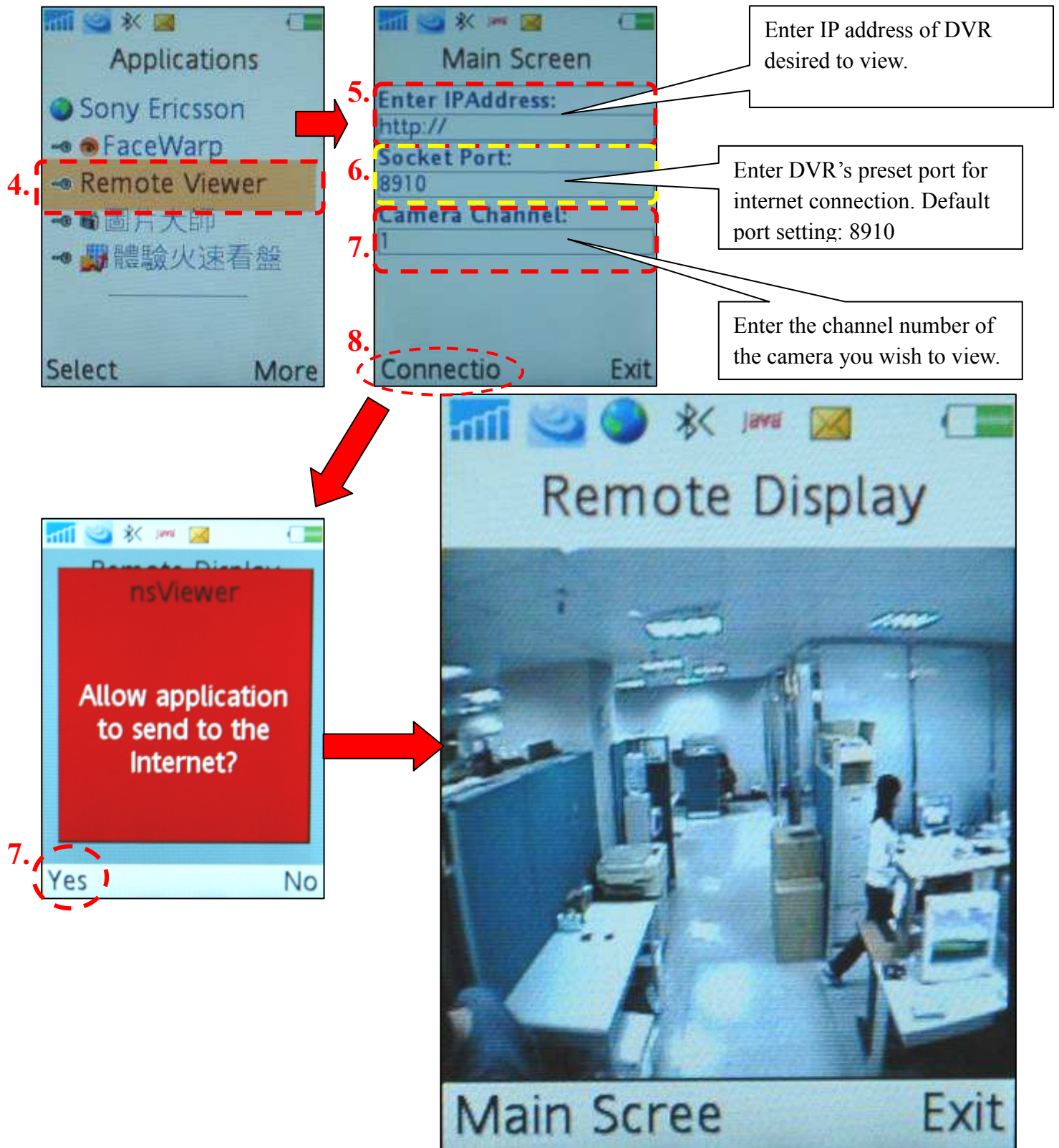


2. Locate and activate “nsViewer.jar” java application in the mobile phone for installation.



3. Activate remote view software “Remote Viewer”.





Note: to change camera channel click on “Main Screen” and re-enter the channel wished to remote view.